

# Viola

# Viola

## Intro.

**Intro.**

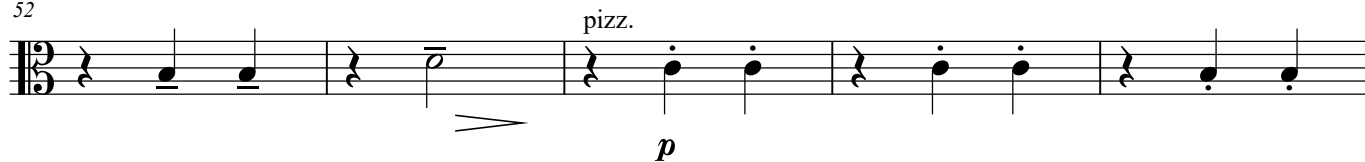
The musical score for the Intro of 'The Sound of Silence' is written for guitar in 3/4 time. It begins with a treble clef and a key signature of one flat (B-flat). The tempo is marked 'Andante'. The score consists of 12 measures. The first measure is a whole rest. The second measure contains a quarter note G2 (one ledger line below the staff) with a forte (f) dynamic. The third measure contains a quarter note A2 (two ledger lines below the staff) with a mezzo-forte (mf) dynamic. The fourth measure contains a half note Bb2 (three ledger lines below the staff) with a mezzo-forte (mf) dynamic. The fifth measure contains a half note C3 (three ledger lines below the staff) with a mezzo-forte (mf) dynamic. The sixth measure contains a half note D3 (two ledger lines below the staff) with a mezzo-forte (mf) dynamic. The seventh measure contains a half note E3 (one ledger line below the staff) with a mezzo-forte (mf) dynamic. The eighth measure contains a half note F3 (one ledger line below the staff) with a mezzo-forte (mf) dynamic. The ninth measure contains a half note G3 (below the staff) with a mezzo-forte (mf) dynamic. The tenth measure contains a half note A3 (below the staff) with a mezzo-forte (mf) dynamic. The eleventh measure contains a half note Bb3 (below the staff) with a mezzo-forte (mf) dynamic. The twelfth measure contains a half note C4 (below the staff) with a mezzo-forte (mf) dynamic. The score is marked with a mezzo-forte (mf) dynamic throughout.

*mp*

[illegible][illegible]

# Ju te vuex

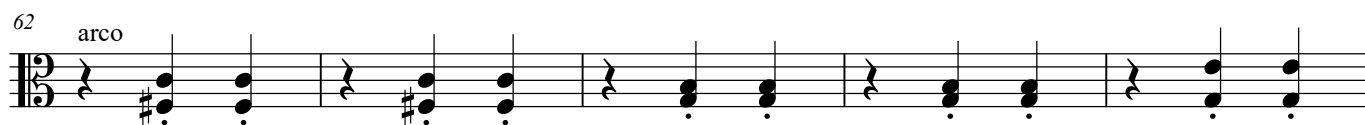
52



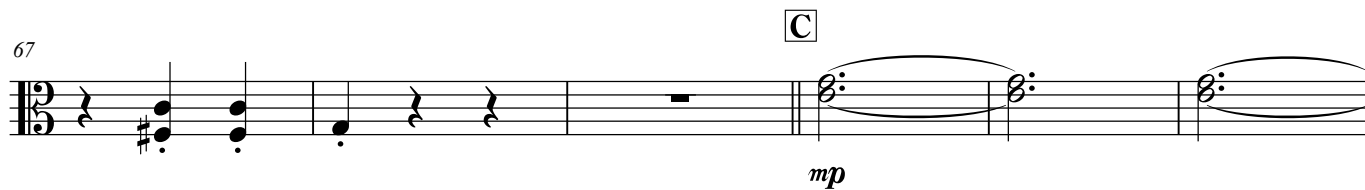
57



62



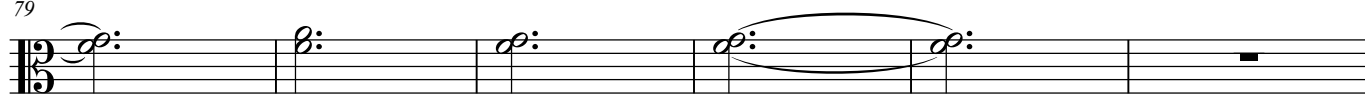
67



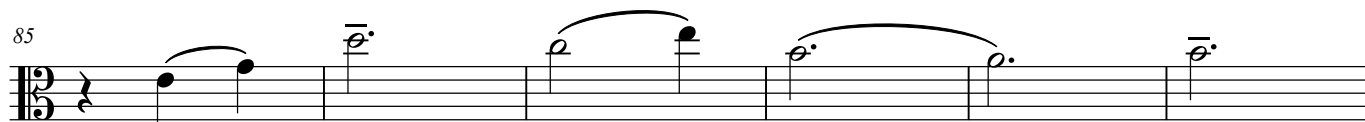
73



79



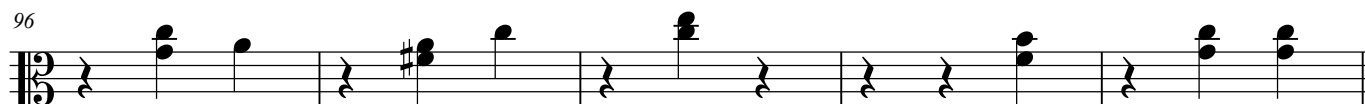
85



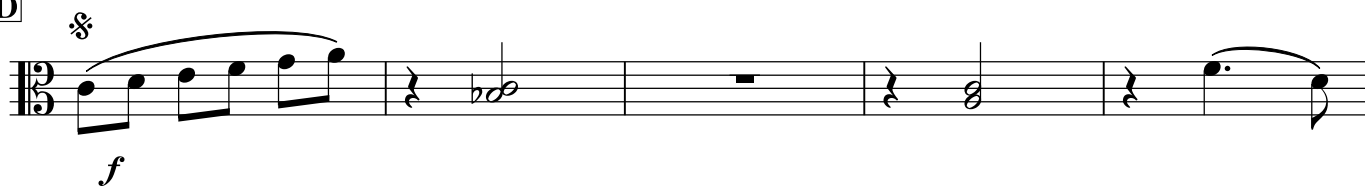
91



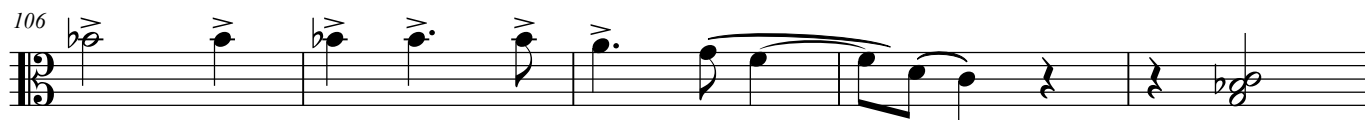
96



**D**

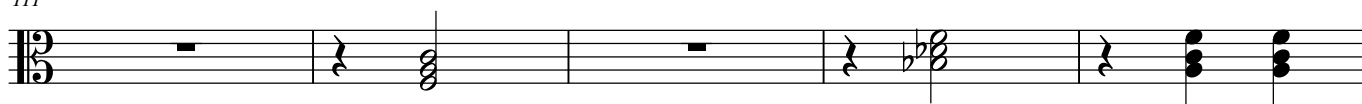


106

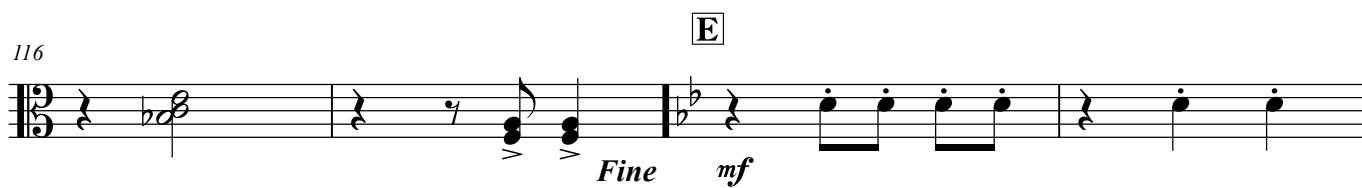


Ju te vuex

111



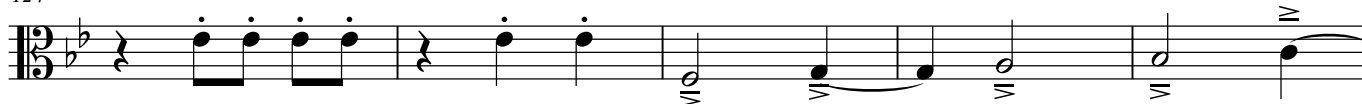
116



120



124



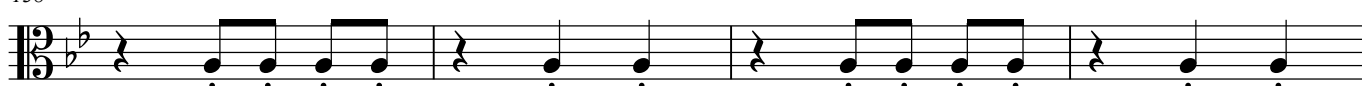
129



134



138



142



147

